

GIUBBOTTO CELTIC



DESCRIZIONE / Description

Giubbotto smanicato imbottito con inserti colorati /
Padded sleeveless jacket with inserts in contrast color

COMPOSIZIONE / Composition

SHELL : 100% Nylon / SHELL: 100% Nylon
LINING: 100% Poliestere / LINING: 100% Polyester
PADDING: 100% Poliestere / LINING: 100% Polyester

TAGLIE / Sizes

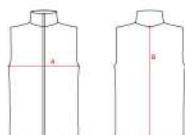
3XS - 2XS - XS - S - M - L - XL - 2XL - 3XL

FITTING **STANDARD**



TAGLIE SIZES	3XS	2XS	XS	S	M	L	XL	2XL	3XL
A - SEMICIRCONFERENZA TORACE A - HALF-CHEST MEASUREMENT	48 cm	50 cm	54 cm	60 cm	68 cm	72 cm	75 cm	77 cm	79 cm
B - LUNGHEZZA TOTALE GIACCA B - BACK LENGHT JACKET	40 cm	44 cm	48 cm	52 cm	60 cm	64 cm	68 cm	72 cm	75 cm

SCHEMA / Scheme



COLORI / Colors



Blu-Royal
NAVY-ROYAL



Blu-Rosso
NAVY-RED



Nero-Rosso
BLACK-RED



Blu-Giallo
NAVY-YELLOW



Rosso-Bianco
RED-WHITE

PERSONALIZZAZIONI / Customizations



RICAMO
embroidery



TRANSFER
transfer



SERIGRAFIA
serigraphy